

Maculata Place



Our new community home

Maculata Place is a 120 bed, two storey state-of-the-art home providing residential care for the elderly of Shepparton and the Goulburn Valley. A 20 bed high care home, Bertram House, is part of Maculata Place.

Set on land adjoining Tarcoola, Maculata Place has been built to complement Shepparton Villages' new model of care that is centred around resident choice.

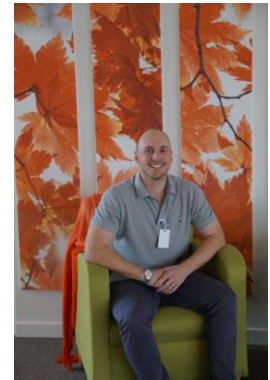
The plaza areas are complete with hairdressing salon, gym, and doctors consulting suites, while the dining rooms have been designed as cafes and home style kitchens for resident and family use. Corridors have been named as streets that lead to resident homes – their rooms – each with a letter box, and doorbell for privacy.

The magnificent gardens and outdoor areas, and four internal courtyards provide plenty of choice for resident activities and outdoor living.

Care Managers

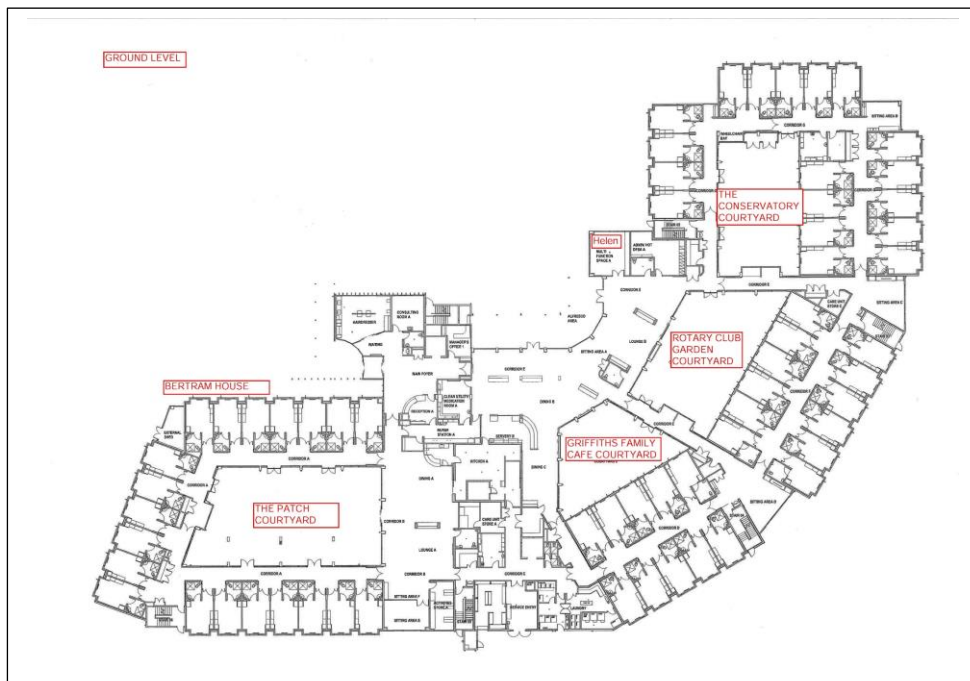
Alanna Jalkanen and Wayde Vidler will manage Maculata Place ensuring residents, staff and visitors' needs are met.

Alanna previously managed Hakea Lodge and will move across with Hakea Lodge residents, while Wayde joins Maculata Place from Rodney Park in Mooroopna.



You can contact Alanna or Wayde at Maculata Place on (03) 5892 4000.

For admission information, contact Helen Mathieson on (03) 5832 0800.



What's on offer at Maculata Place?

When you come to Maculata Place, for additional comfort and luxury, all accommodation options include the following standard offerings as part of the Enhanced Living Packages at Maculata Place:

- 50-inch TVs with access to the SWIFT network (like a Foxtel for seniors) that has over 100 old movies, virtual travel, exercises etc. Families can send photos of events direct to this TV.
- TV will also provide personalised messages to residents in their rooms, eg "Good morning Mavis, you have a hair appointment at 10.30 this morning" as well as provide residents with the daily lifestyle activities schedule, menu for the day etc.
- Wi-fi access for family and friends to use as well as residents
- Aged friendly telephone (big numbers)
- Unlimited phone calls as Shepparton Villages will run the telephone system – no more dealing with providers for residents and their families
- Inhouse fridge which will contain bottled water
- Coffee machines and snacks for residents and visitors in kitchen nooks
- Access to bus for outings including shopping

Unique Maculata Place Enhanced Living offerings for additional optional purchase:

- Pamper packs available for residents to purchase including regular hair, nails and pamper sessions
- Personal shopping trips
- Daily newspaper delivered to your house.
- Weekly fresh flowers to your house
- Men's Shed Access
- Trust account management

Admissions information: How to live with us

To inquire further about living with us at Maculata Place, please contact Helen Mathieson our Admissions Co-ordinator. Today Helen is located in the multi-function space on the Ground Floor (marked on map), or you can call (03) 58 320 800 during office hours or email helenm@sheppvillages.com.au

You may not need care now for yourself or a loved one, but it is wise to make inquiries now and discuss your future needs with Helen who can assist with advice and information.

How much does it cost?

Everyone's situation is different/unique so requires initial discussion to determine your level of need and your financial commitment. Admission is based on income and assets, as per Government formulas, as well as your assessed care needs. Helen can discuss this with you.